

Instructions for Replacing the Manual Time Clock for 75 Watt Transformer #CJT75SSMTTC

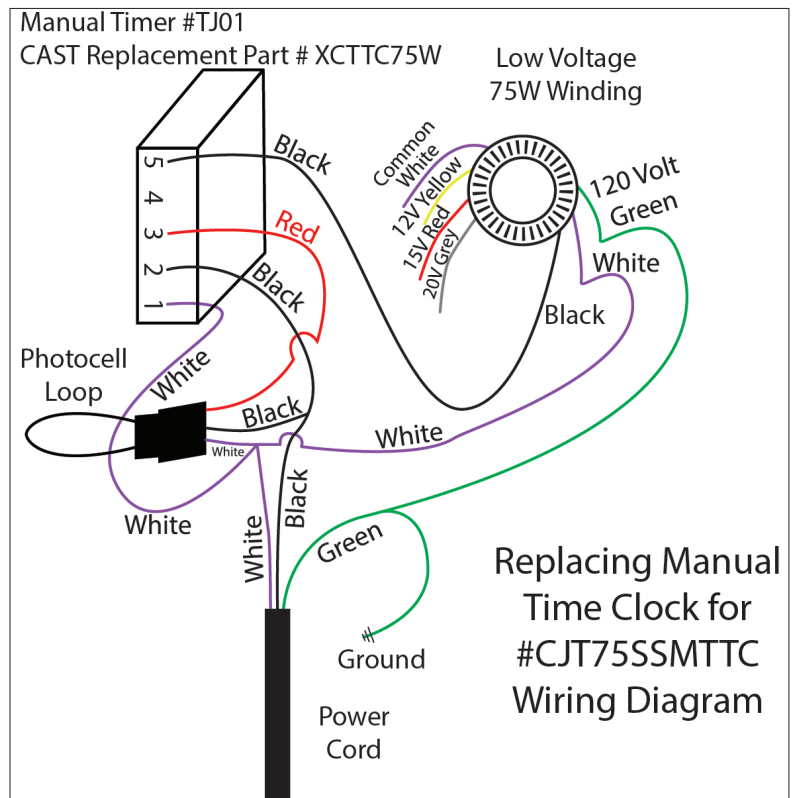
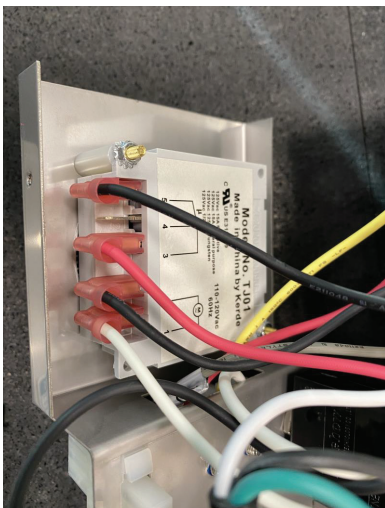
Step 1: EXTREMELY IMPORTANT to Avoid Possible Electrocution Hazard!!
Make sure the power supply is unplugged from 120V power during this procedure.

Step 2: Remove five cabinet screws on the left and right side of the cabinet.



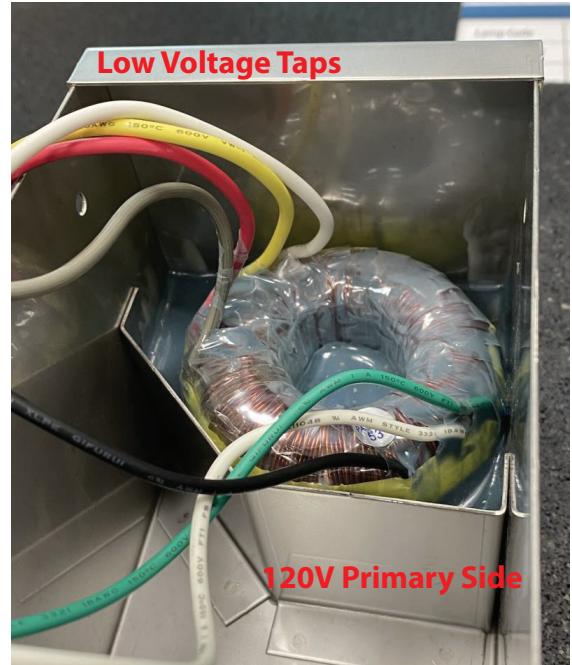
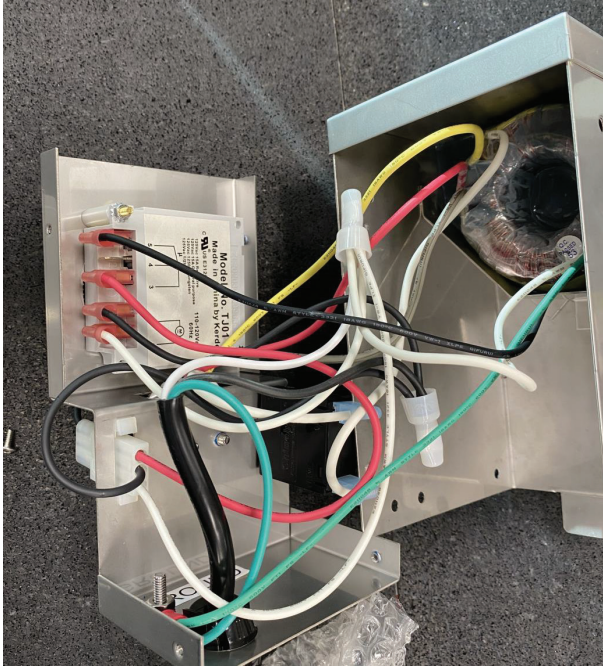
Step 3: Remove Manual Time Clock #TJ01 and install replacement. Press on flag-style quick-connects. Install as follows:

- #1 White Neutral from Wire Nut Pigtail Power Cord.
- #2 Black Hot from Wire Nut Pigtail Power Cord
- #3 RED from Photocell Quick-Connect on Panel
- #5 Black to Magnetic Winding.
- *(NOTE: #4 POSITION IS NOT USED).



Step 4: Make sure connections are pushed on fully and no wires are loose including low voltage terminal connections

Reference Photos of the Interior of the Power Supply



Step 5: Reassemble power supply, test operation. Finished.



www.cast-lighting.com